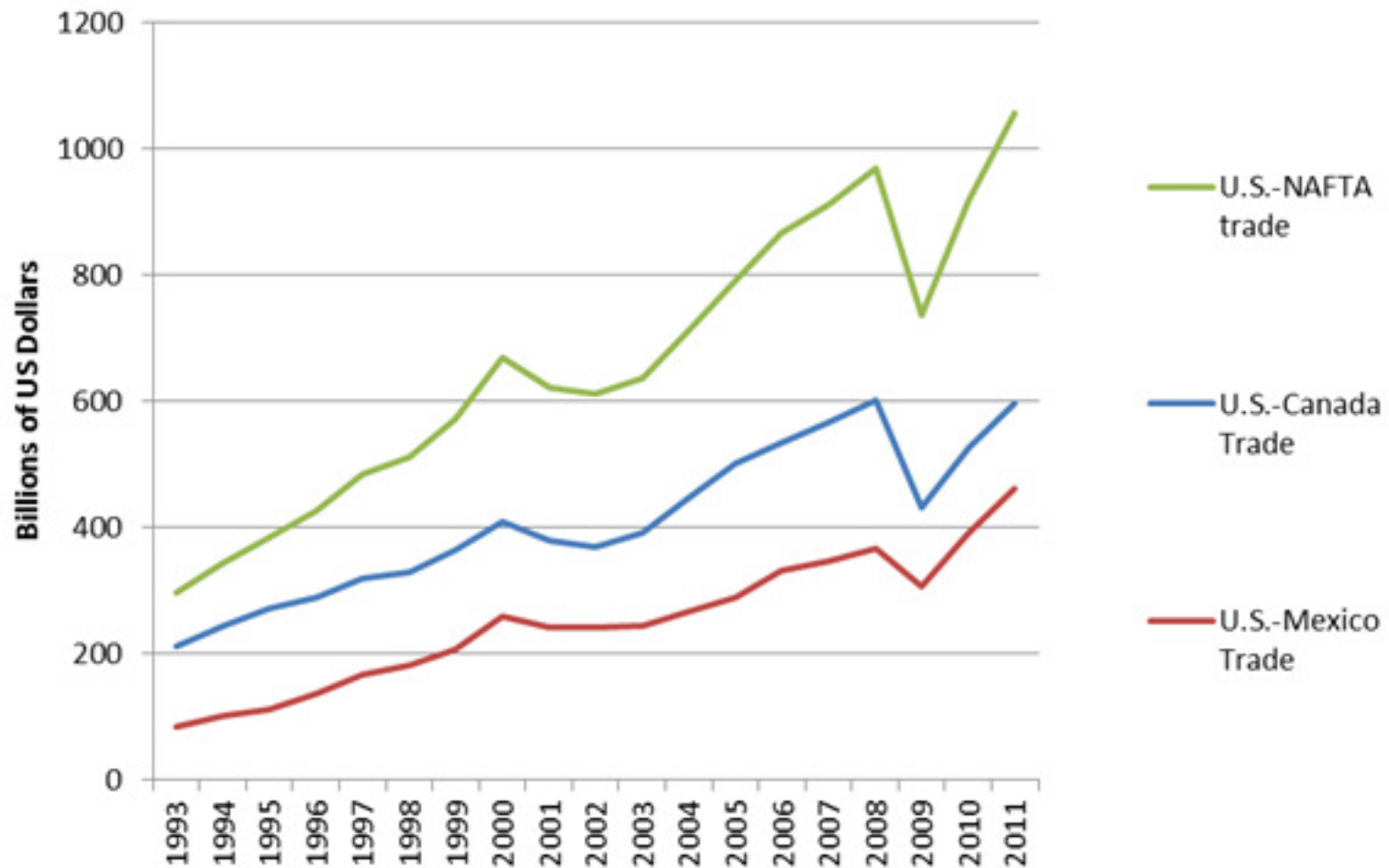


Toward A North American Competitiveness Agenda

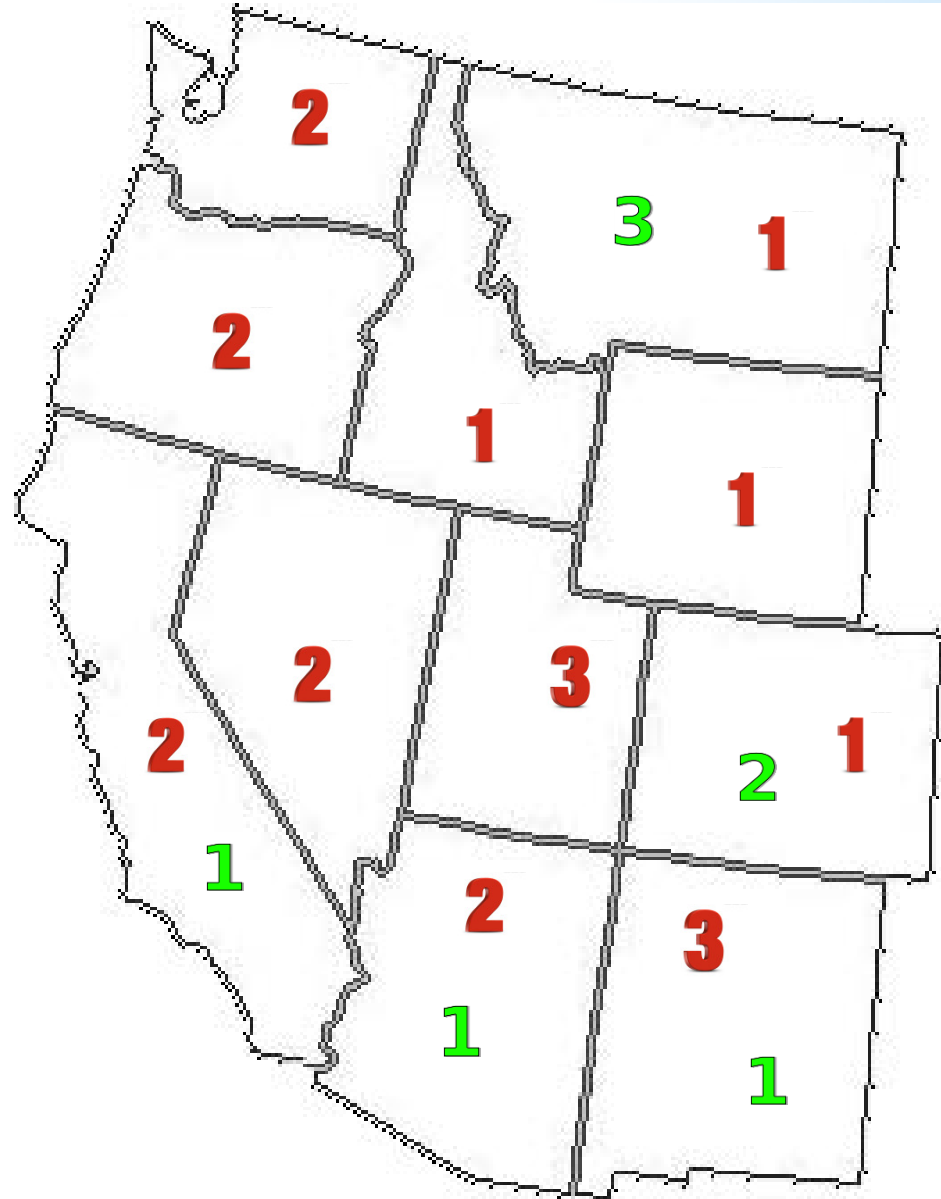
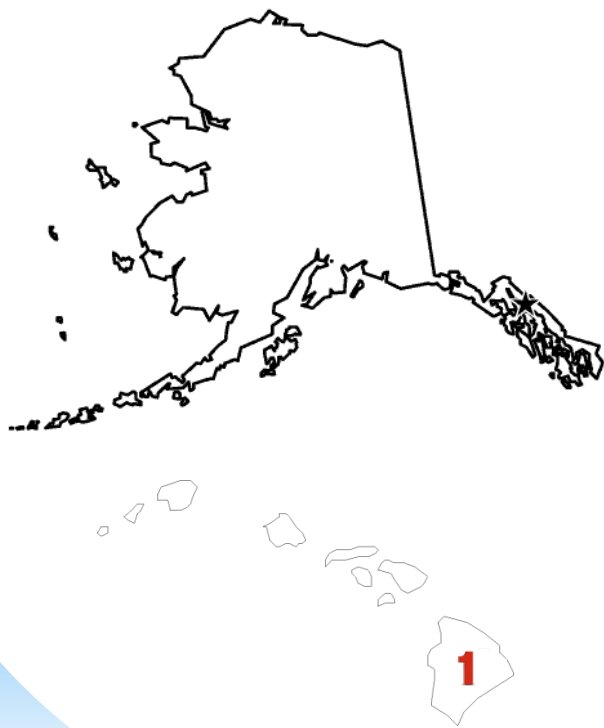
Christopher E. Wilson

US Trade with Canada and Mexico , 1993-2011



Source: U.S. Department of Commerce, Census Bureau

Western States' Top Export Markets

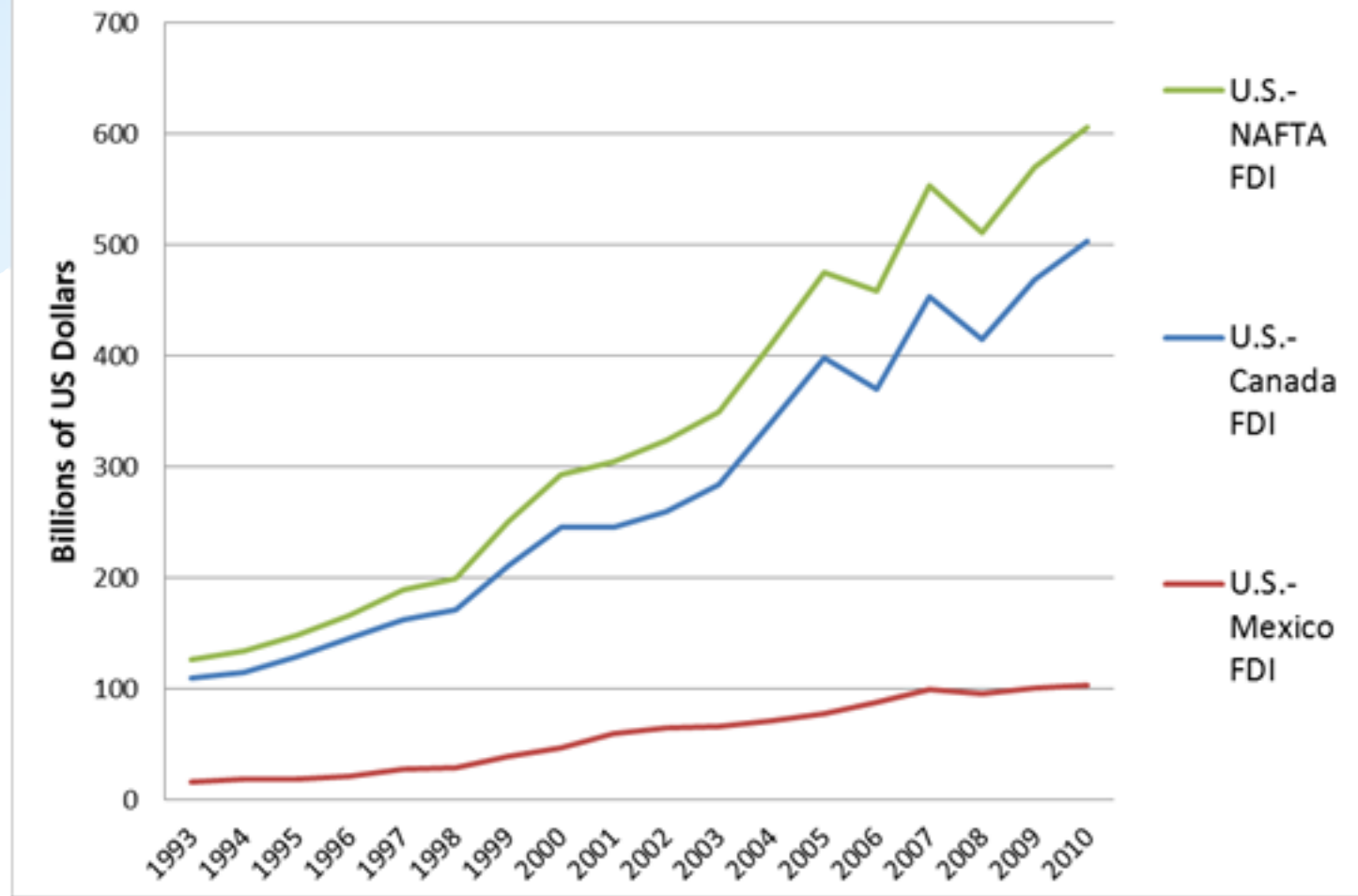


Red: Canada
Green: Mexico

Value of U.S. Content in Imports from Select Economies	
Mexico	40%
Canada	25%
Malaysia	8%
Korea	5%
China	4%
Brazil	3%
European Union	2%
Japan	2%
India	2%
Russia	1%

Source: Robert Koopman, William Powers, Zhi Wang and Shang-Jin Wei, *Give Credit Where Credit is Due: Tracing Value Added In Global Production Chains*, National Bureau of Economic Research Working Paper No. 16426, Cambridge, Massachusetts: September 2010, revised March 2011, p.38.

Foreign Direct Investment Positions, 1993-2010, Historical Cost Basis

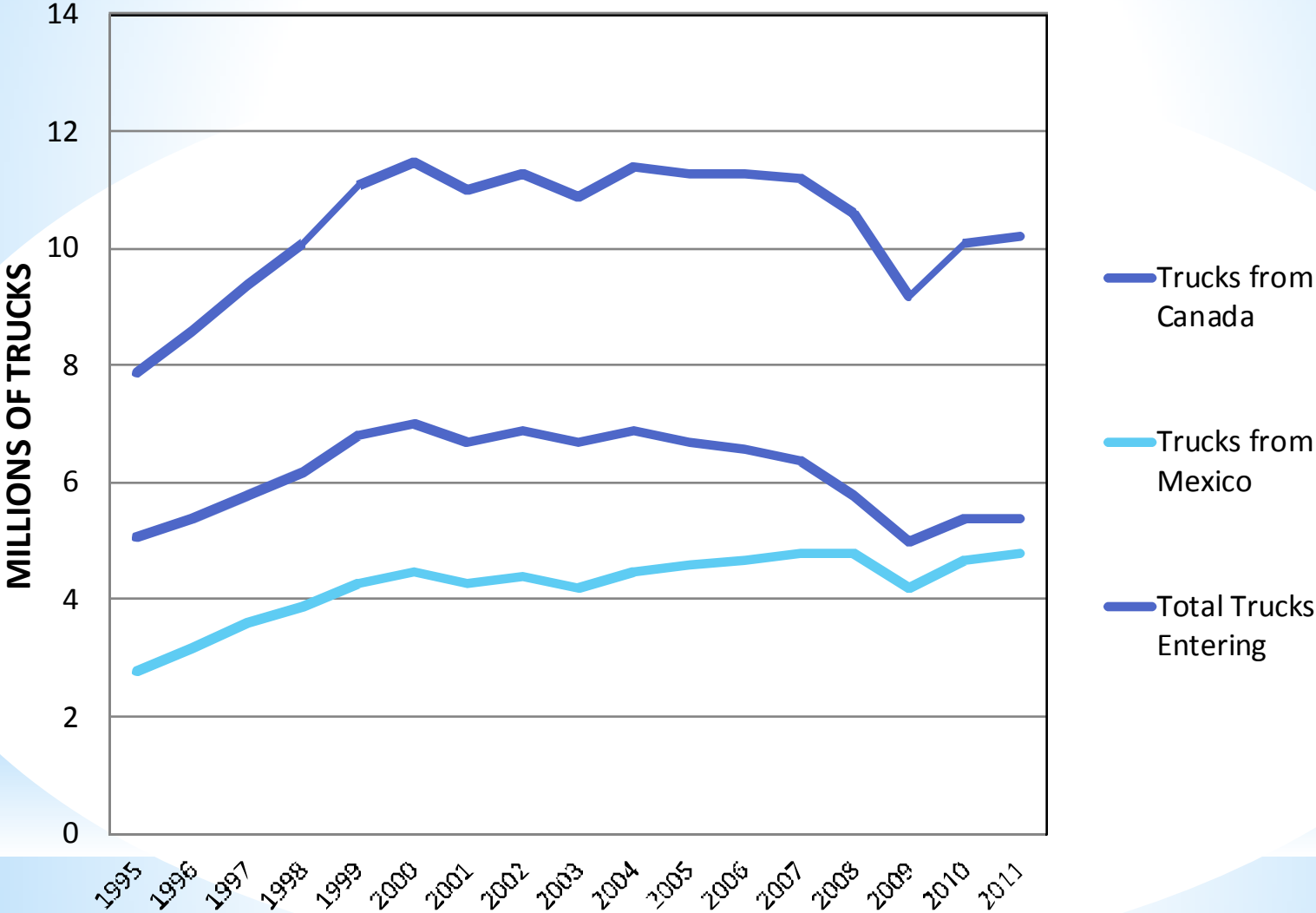


Source: U.S. Department of Commerce, Bureau of Economic Analysis

Policies and Strategies for Competitiveness

- *The Border
- *Trans-Pacific Partnership
- *Regulatory Standards
- *Customs Simplification and Convergence

Trucks Entering the U.S., 1995-2011

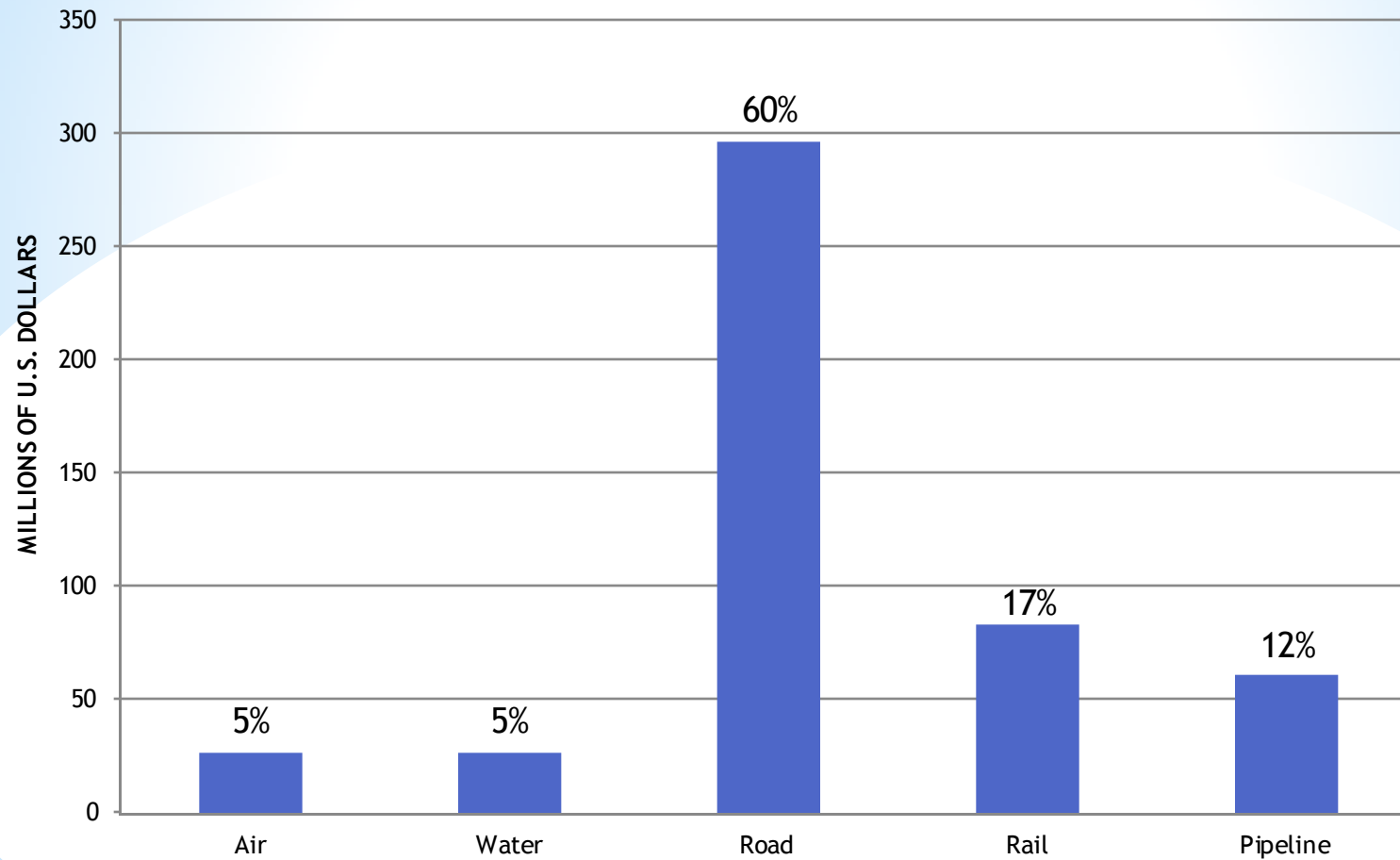






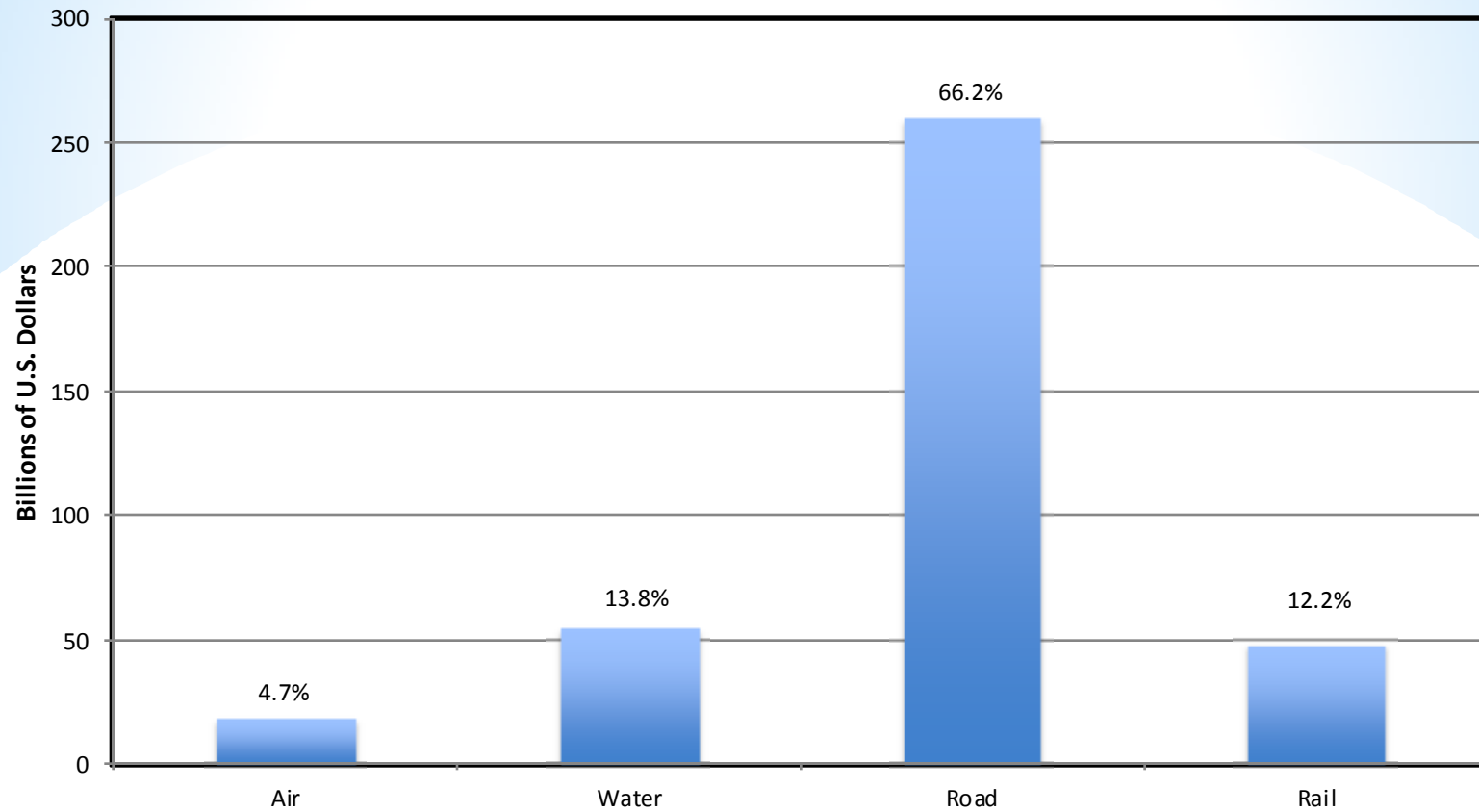
***Extra
Slides**

U.S. Trade with Canada by Mode of Transportation, 2010



Source: North American Transportation Statistics Database,
<http://nats.sct.gob.mx/nats/sys/tables.jsp?i=3&id=17>

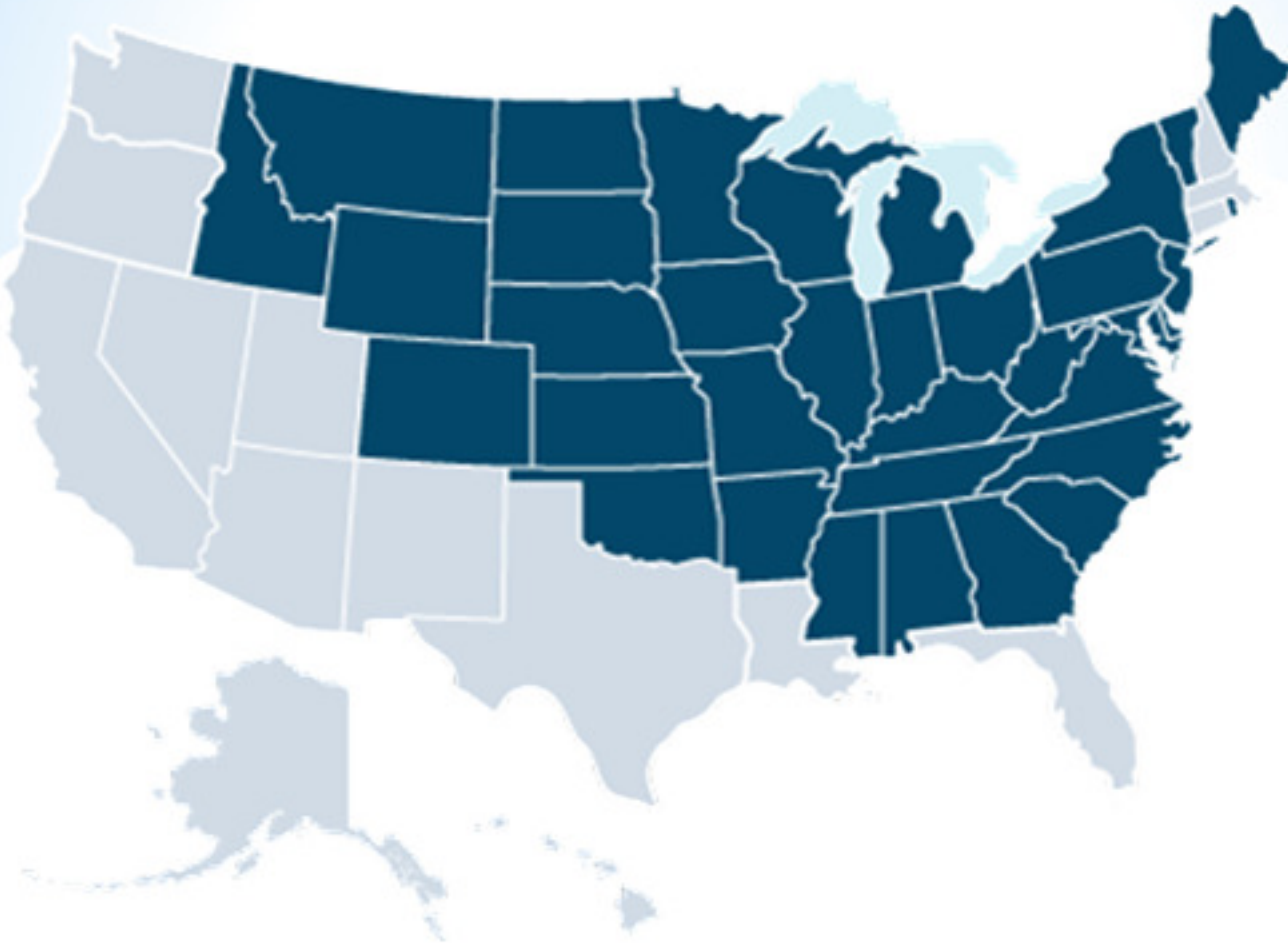
U.S. Trade with Mexico by Mode of Transportation, 2010



Note: Trade by pipeline not included (0.6%)

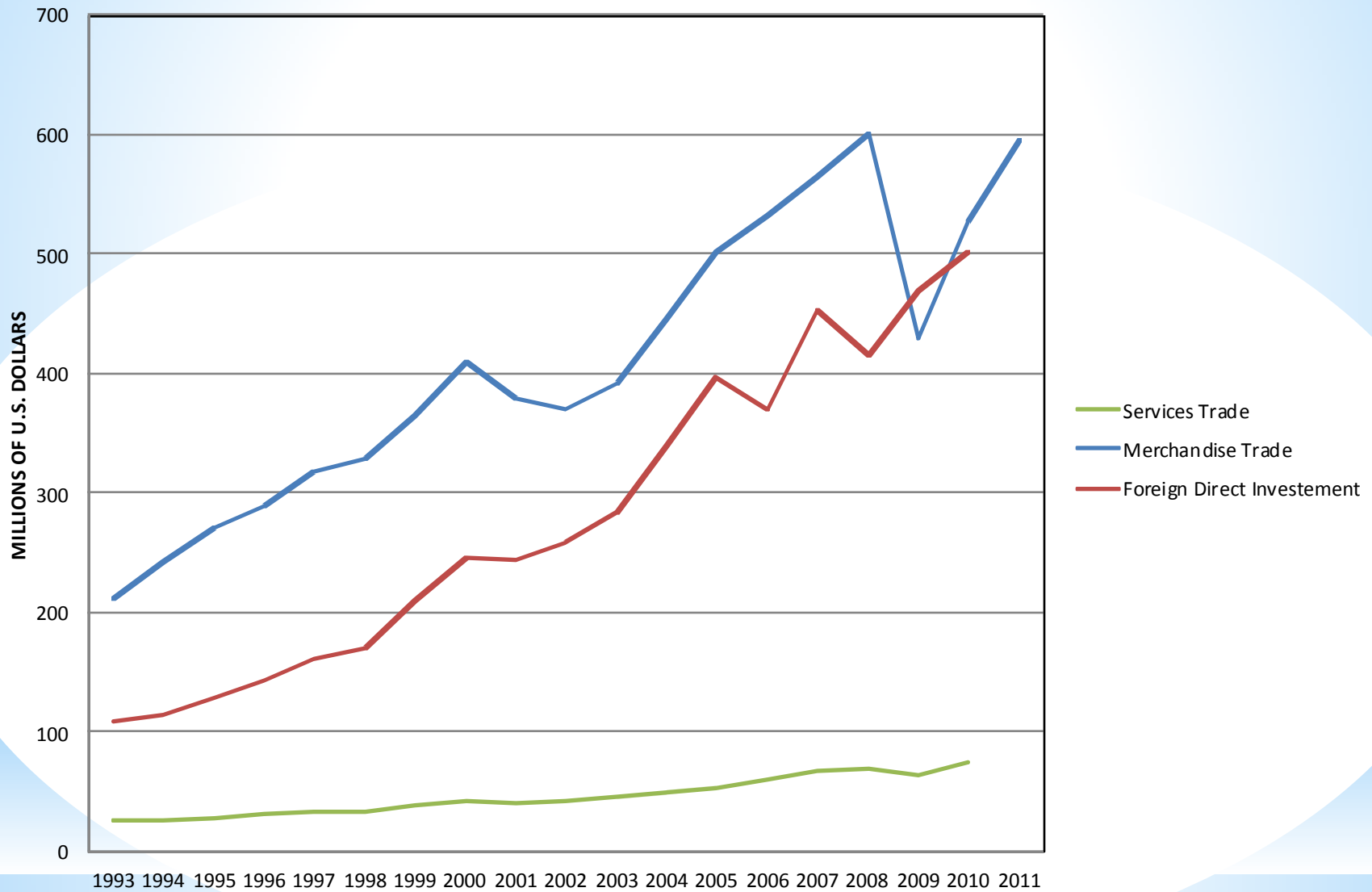
Source: North American Transportation Statistics Database,
<http://nats.sct.gob.mx/nats/sys/tables.jsp?i=3&id=17>, accessed April, 2012.

U.S. - Canada Trade Map



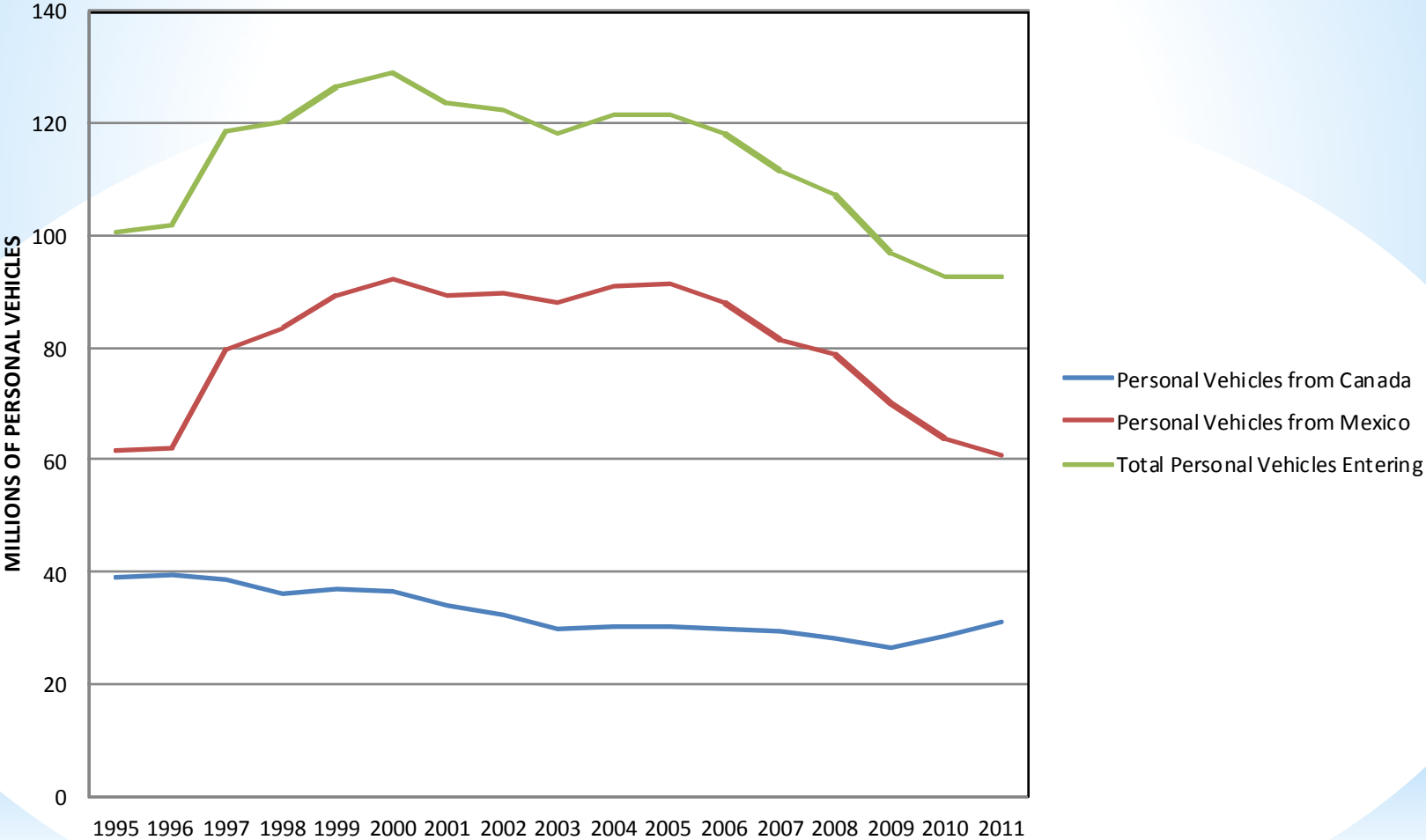
Canada is the # 1 export market for 34 states

U.S.-Canada Bilateral Trade and Investment, 1993-2011

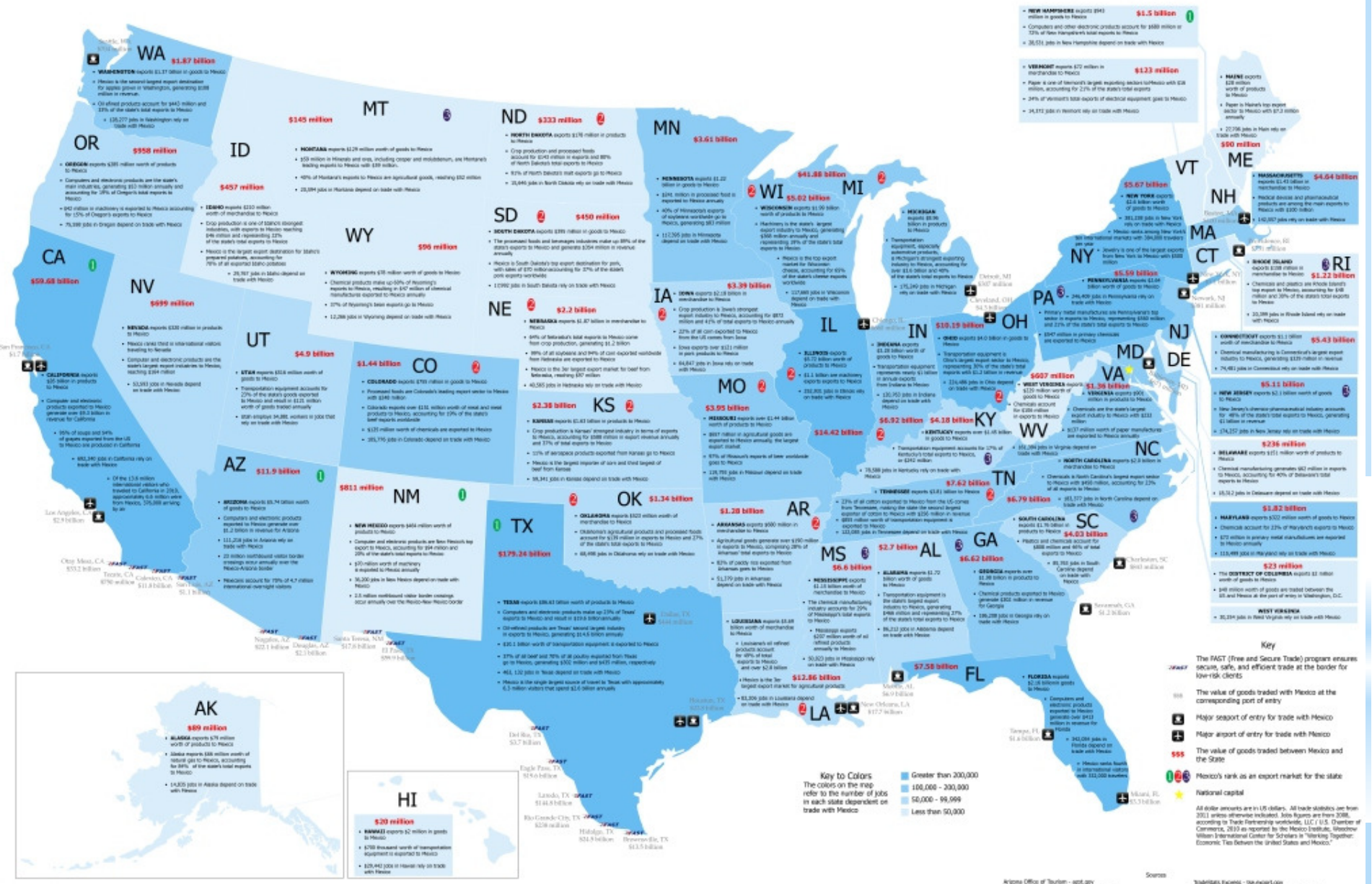


Source: U.S. Department of Commerce, Census Bureau

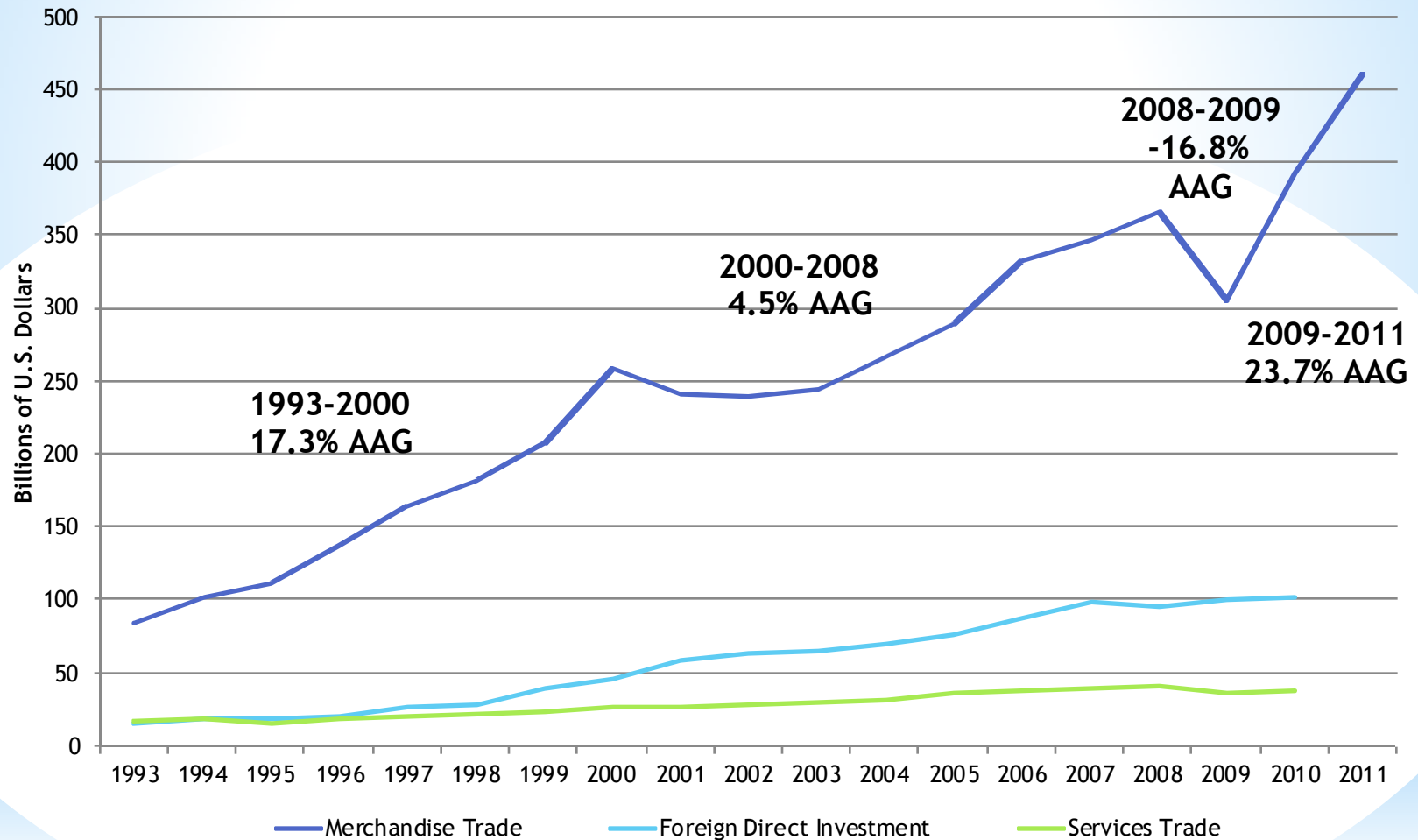
Personal Vehicles Entering the U.S., 1995-2011



6 million US jobs depend on trade with Mexico



U.S.-Mexico Bilateral Trade and Investment 1993-2011



Note: imports plus exports for trade, inward plus outward investment positions
 Source: U.S. Department of Commerce, Bureau of Economic Analysis and Census Bureau

Top Ten U.S. Metropolitan Area Exporters

To Canada

Rank	Metro Area	Exports to Canada
1	Detroit, MI	\$15.2
2	Chicago, IL-IN-WI	\$10.8
3	New York, NY-NJ-PA	\$10.3
4	Los Angeles, CA	\$8.1
5	Houston, TX	\$8.1
6	Philadelphia, PA-NJ-DE-MD	\$5.7
7	Minneapolis, MN-WI	\$5.0
8	Cincinnati, OH-KY-IN	\$4.3
9	Dallas, TX	\$3.4
10	Seattle, WA	\$3.3

To Mexico

Rank	Metro Area	Exports to Mexico (\$billions)
1	Detroit, MI	\$10.9
2	Los Angeles, CA	\$8.9
3	Houston, TX	\$8.7
4	El Paso, TX	\$5.8
5	San Diego, CA	\$4.2
6	Laredo, TX	\$3.5
7	New York, NY-NJ-PA	\$3.4
8	Chicago, IL-IN-WI	\$3.4
9	Dallas, TX	\$2.9
10	Tampa, FL	\$2.8

Source: the Office of Trade and Industry Information, Manufacturing and Services, International Trade Administration, U.S. Department of Commerce