

IDAHO



**STATE DEPARTMENT
OF AGRICULTURE**



Idaho Invasive Species Program

CSG West September 11 2024

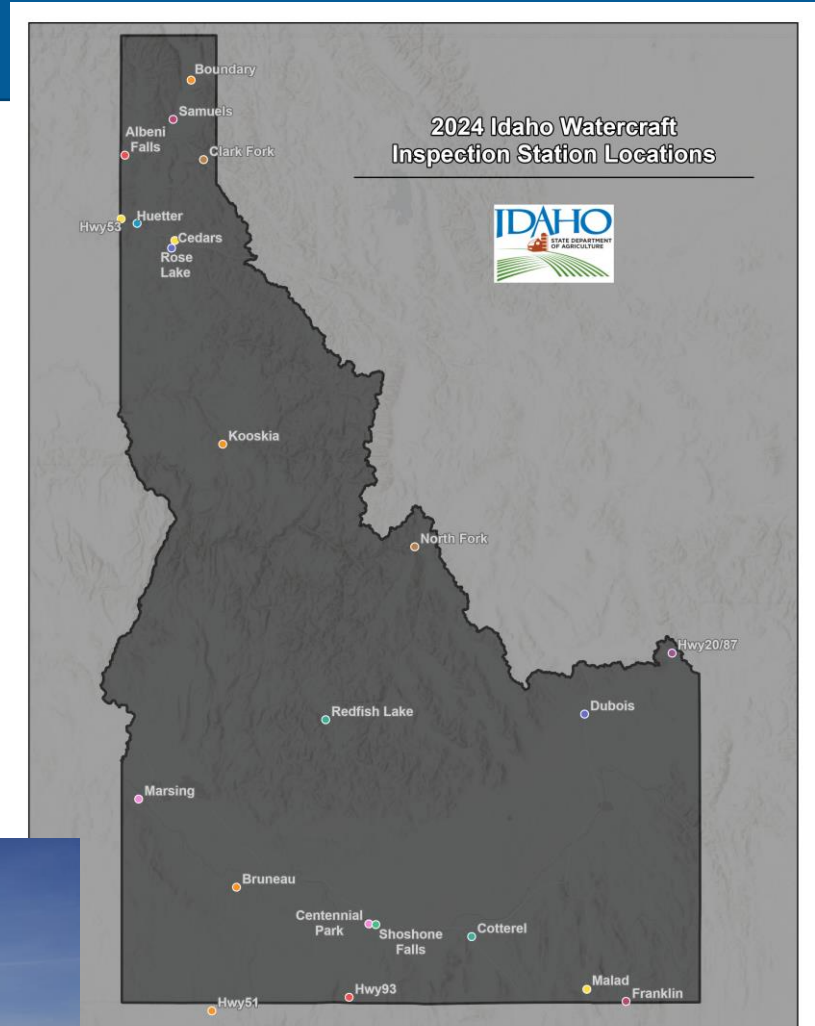
Invasive Species Program Areas

- Inspection & Decontamination
 - Watercraft Inspection
 - Product Inspection
- Early Detection Monitoring
 - Plankton tow
 - Adult surveys
 - eDNA
- Management and Control
 - Active control programs
 - Rapid response planning
- Education and Outreach
 - Public campaigns
 - Partnerships



2024 Watercraft Inspection

- **16th** Year of the inspection program
 - **142K** inspections
- **21** Mussel fouled watercraft
- **23** Inspection stations (3 new stations)
 - **9** Local station cooperators
- Extended night operations
 - **18** Hour (6AM-midnight)
 - Malad (I-15 N), Cedars (I-90W), Jackpot (HWY 93 N)
 - **24** Hour
 - Cotterell (I-84W)
- Law enforcement support
 - Local County Sheriff
 - Idaho State Police



Inspection Station Cooperators

- Bear Lake Regional Commission
 - Garden City (Utah) & Laketown Canyon (Utah)
- Bonner Soil & Water Conservation District
 - Albeni Falls, Samuels & Clark Fork
- Boundary Soil and Water Conservation District
 - Bonners Ferry
- Bruneau River Soil & Water Conservation District
 - Bruneau & Marsing
- Franklin County
 - Franklin
- Kootenai-Shoshone Soil & Water Conservation District
 - I-90W Cedars, I-90E Huetter, Rose Lake, HWY 53
- Oneida Soil & Water Conservation District
 - I-15 N Malad
- Shoshone-Paiute Tribe
 - Duck Valley
- West Cassia Soil & Water Conservation District
 - I-84 W Cotterell
- ISDA operated stations
 - North Fork, Hwy 20/87, Hwy 93 Jackpot, Kooskia, Dubois, Redfish, Centennial Park, Shoshone Falls

Thank you to our 2024 station cooperators!

Law Enforcement Support

- ▶ Boater safety and compliance
- ▶ Focused during hours of high traffic
- ▶ Inspectors contact dispatch as needed



- Idaho State Police
- Bonner County Sheriff
- Cassia County Sheriff
- Kootenai County Sheriff
- Oneida County Sheriff
- Owyhee County Sheriff



AIS Roving Inspection

- Watercraft inspection & boater education
- Primarily at high use boat launches and boating events
 - Races, expos, regattas, peak holiday weekends, etc.
- Thursday-Sunday work week
- Motorized and non-motorized users
 - Headwater launches (i.e. Boundary Creek)
- Decontaminate high risk watercraft at destination
- 5 regional inspection crews
 - Boise
 - Idaho Falls
 - Post Falls
 - Twin Falls
 - Sandpoint



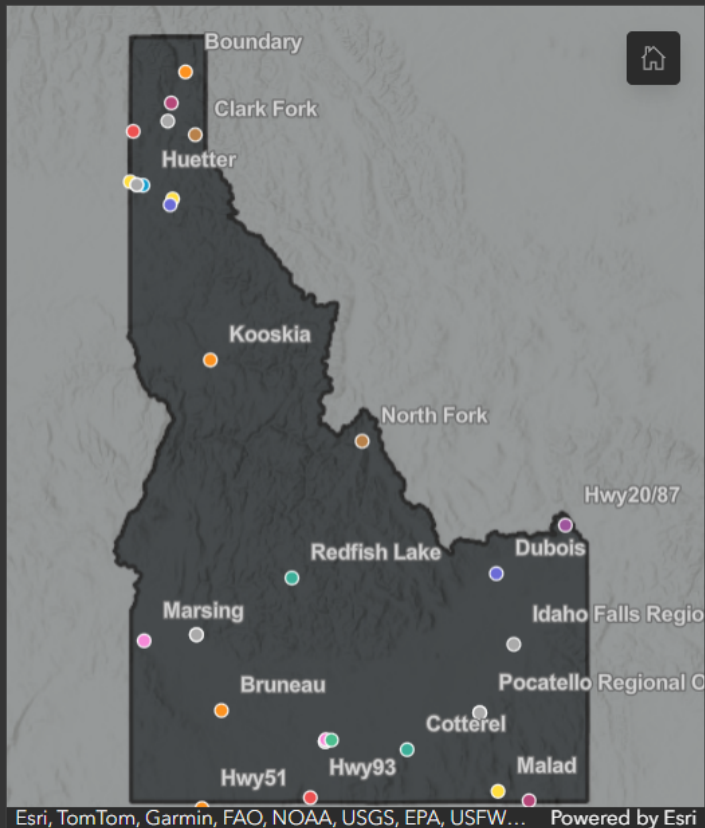
2024 Idaho Watercraft Inspection Stations Dashboard

Filter By Station
All Stations

Filter by Date
All Dates

Weeds on Watercraft?

380



Law Enforcement

1,059

From Infested Water

5,308

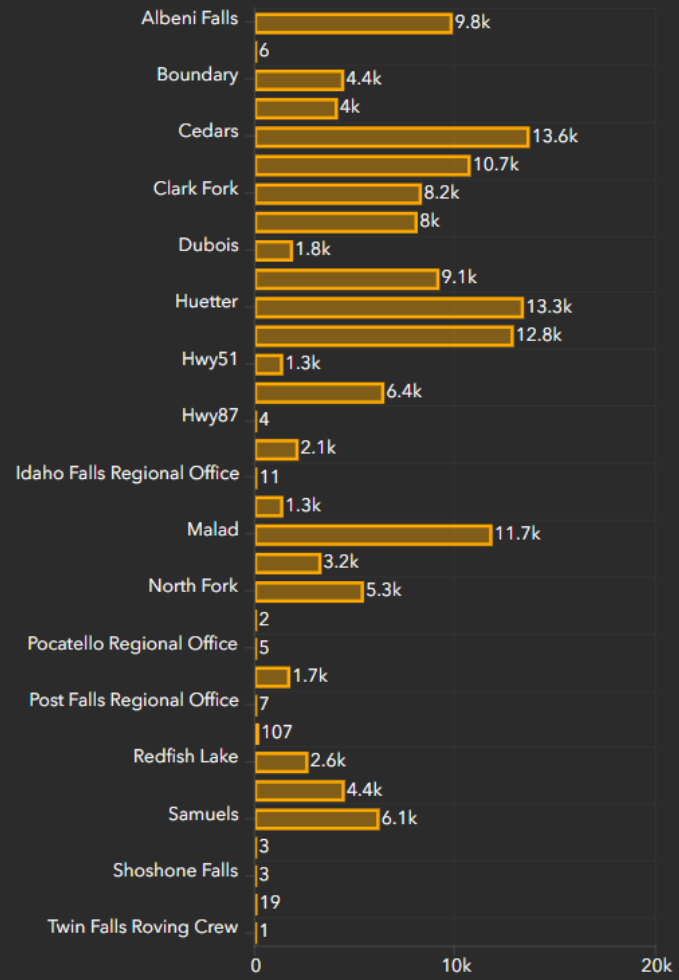
Total Hotwashed

7,603

Total Watercraft Inspected

141,940

Inspections by Station



Inspections From Fouled Waters

Inspection Station = Malad
Date and Time = Tue Sep 17 2024 15:42:00 GMT-0700 (Pacific Daylight Time)
Watercraft Type = Fishing Boat
Days in Water = 3
Days out of Water = 7
Name of Waterbody = Pleasant Lake Arizona
Destination State = Montana

Inspection Station = Centennial Park
Date and Time = Tue Sep 10 2024 11:28:00 GMT-0700 (Pacific Daylight Time)
Watercraft Type = Fishing Boat
Days in Water = 1
Days out of Water = 365
Name of Waterbody = Centennial Waterfront Park Idaho
Destination State = Idaho

Inspection Station = Samuels
Date and Time = Tue Sep 10 2024 11:18:00 GMT-0700 (Pacific Daylight Time)
Watercraft Type = Kayak
Days in Water = 1
Days out of Water = 14
Name of Waterbody = Bemidji Lake Minnesota
Destination State = Idaho

ISDA's Rapid Response Plan

Detection Verification- September 18

Notify impacted entities.

Implement containment measures.

Conduct delimiting surveys.

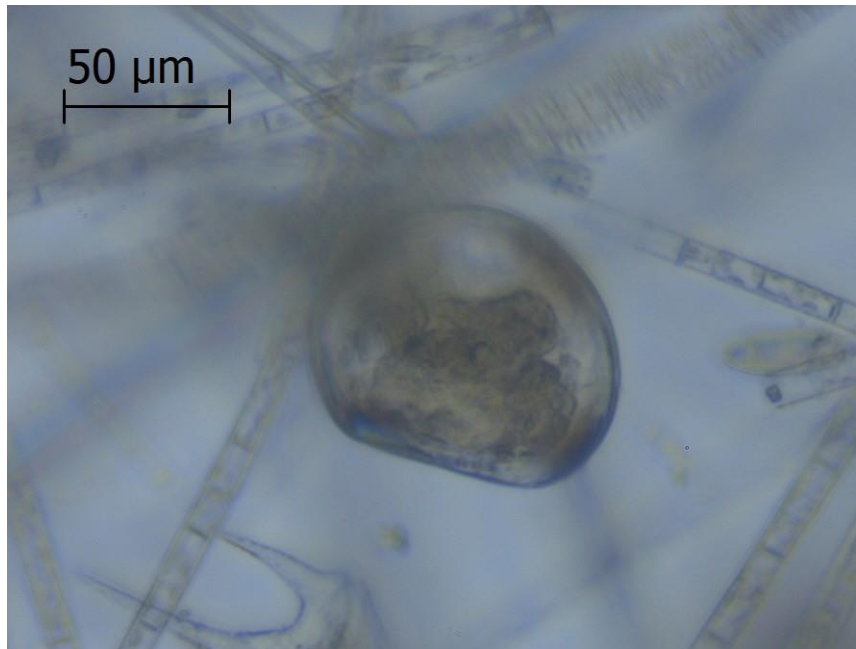
Explore treatment options.



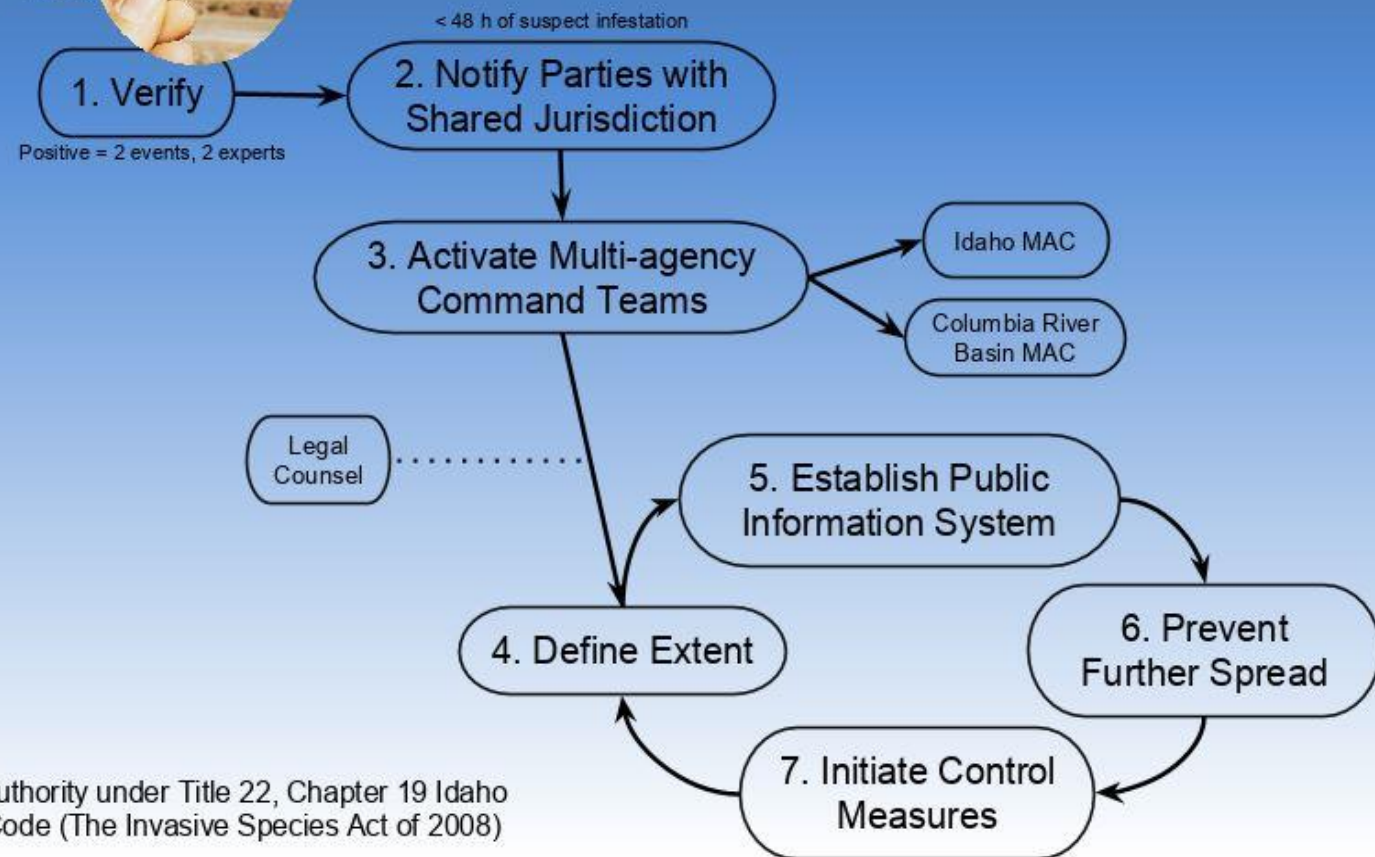
Detection Verification

Sept 18th Quagga Mussel veligers verified

- Multiple sample events
- Multiple specimens per sample
- qPCR genetic verification



Idaho Rapid Response Plan For Early Detection of Dressenid Mussels



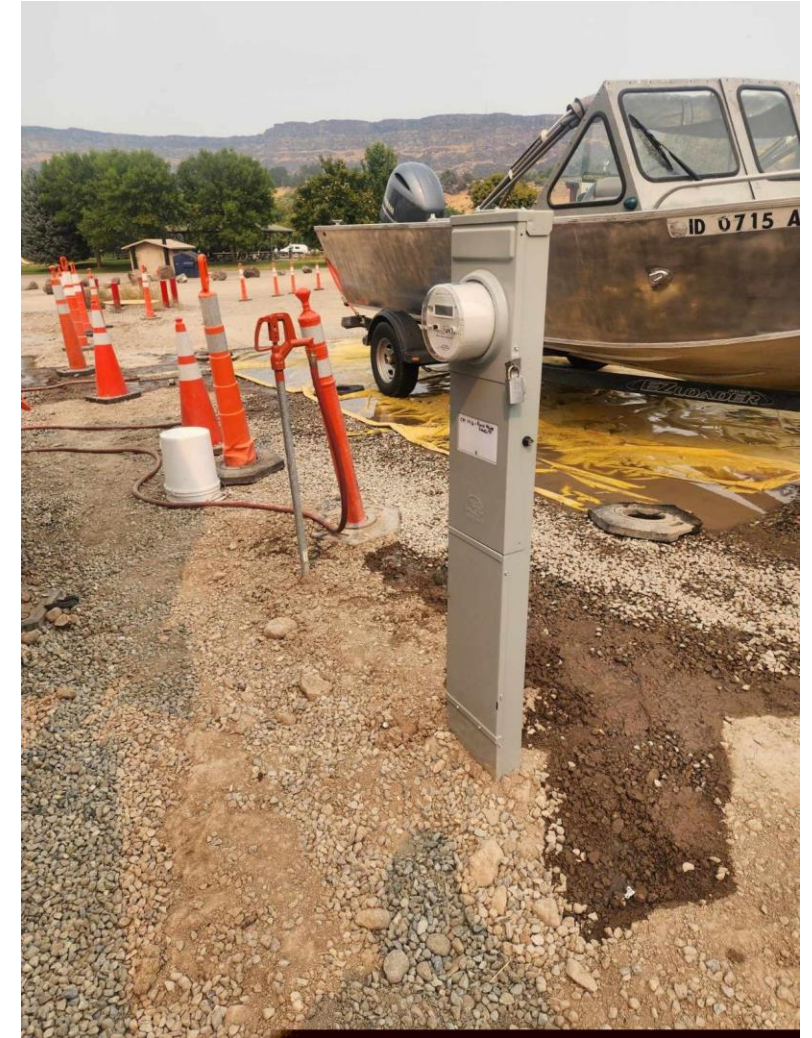
Perform Treatment

- Treatment Started on October 3
- Treatment continuous for 192 hours
- Treatment ended on October 13
- 46,475 Gallons of Natrix® applied
- Copper actively monitored until recorded as back to base levels on October 18, 2023



Current Status

- Program shift to **prevention/containment**
- Mandatory decontamination for the Mid-Snake
 - Centennial Park (Exit decontamination)
 - Shoshone Falls (Closure in effect)
- Mandatory Inspection for Out of State Watercraft
- “Pull the Plug” law
- Budget enhancement
 - \$6.5M Idaho General Fund
 - \$1.5M Idaho Invasive Species Fund
 - 50/50 Cost Share USACE PSMFC WRDA APC Funds
- 2 additional FTE staff for Invasive Species



2024 Early Detection Monitoring

Double Monitoring Efforts Statewide

Veliger Monitoring (microscopy)

- ~ **3,000** plankton samples collected from **80** waterbodies)
 - Multiple sample events, bi-weekly, per waterbody
 - Priority overnight shipment
 - 2 week turnaround for lab analysis

Adult Monitoring (visual)

- ~ **3,000** surveys conducted
- SCUBA, Reservoir drawdown, substrate and benthic grab sampling

Exploring other monitoring methods

- eDNA



Idaho Waterways Survey
A Standard Operating Procedure for Aquatic Plants & Invasive Species





7 days 30 days 1 year

Scale

Snake River NR Twin Falls ID - 13090500

September 11, 2023 - September 10, 2024

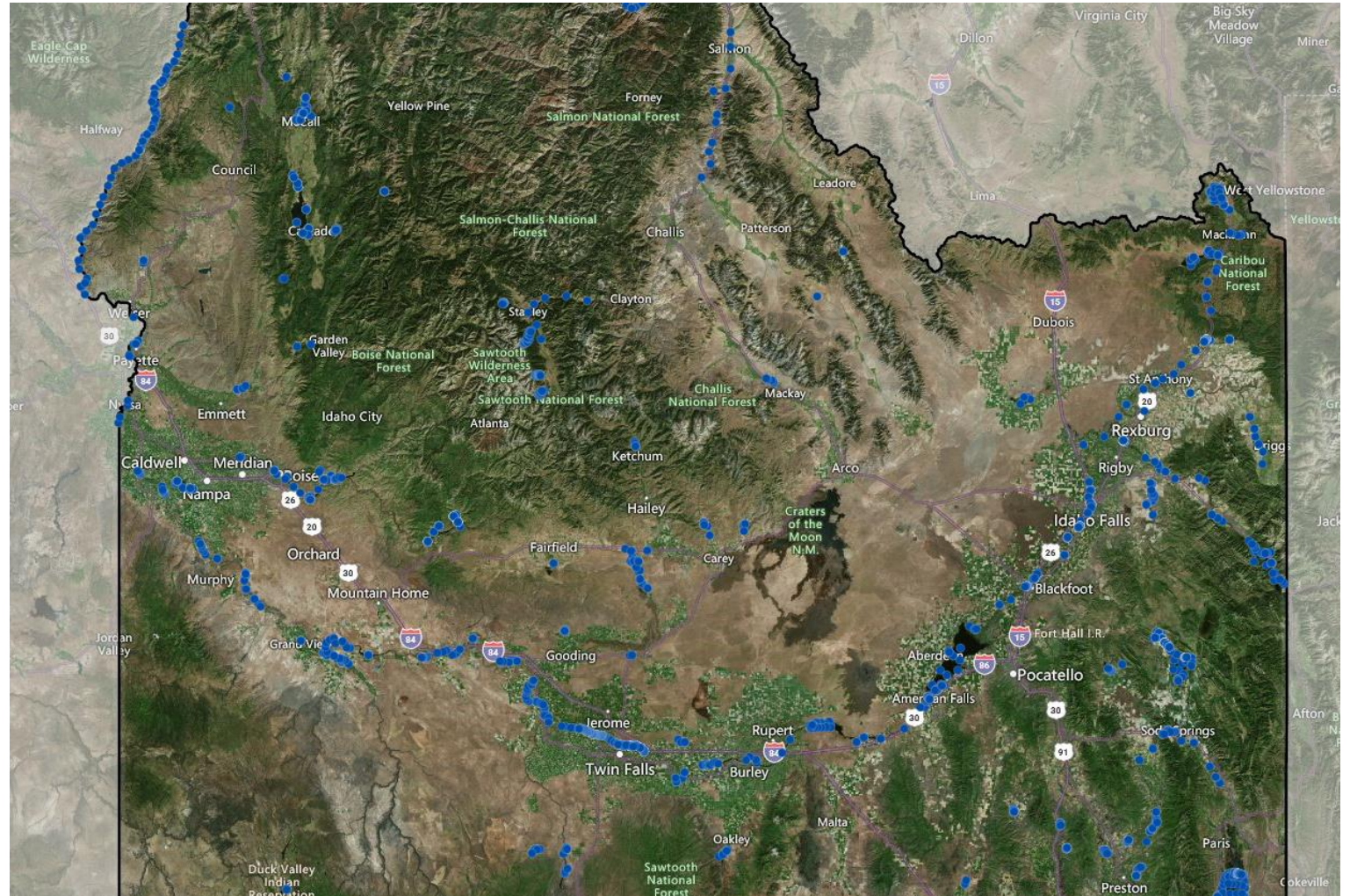
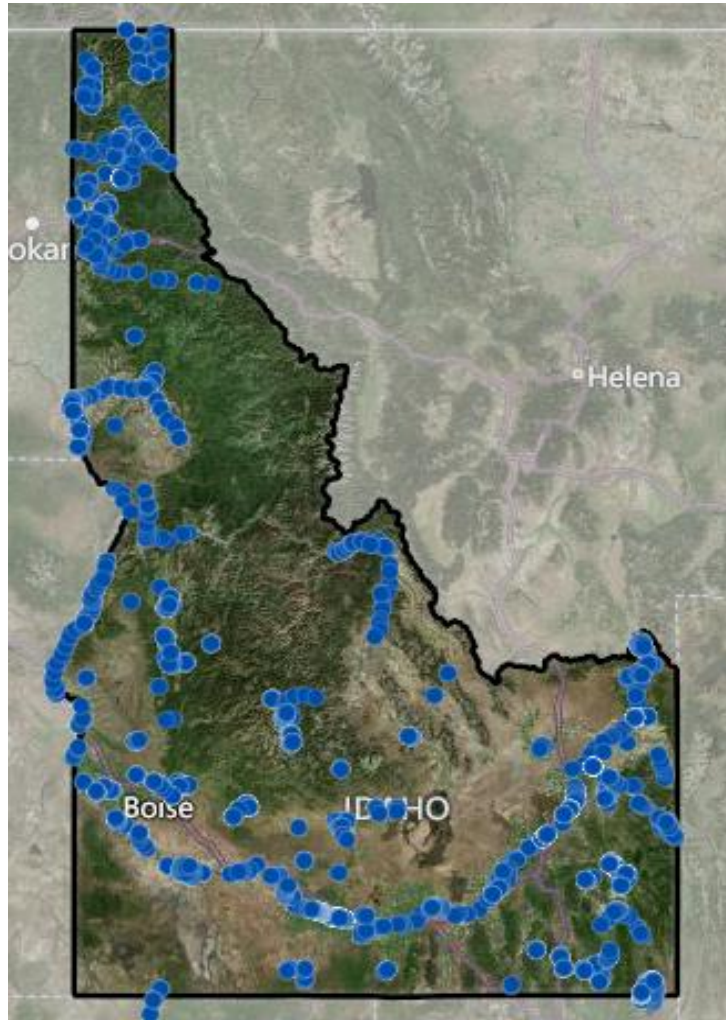
Discharge, cubic feet per second

552 ft³/s - Sep 10, 2024 12:45:00 PM MDT



IMPORTANT: Data may be provisional

2024 Monitoring Locations



Education Campaign- Clean Drain Dry

- Revamp Website
- Revamp entire Clean, Drain, Dry campaign
 - Video (short and long format)
 - Radio
 - Social Media
 - Digital Display
 - Promotional Items
 - Outdoor Display
 - Billboard
 - Marina
 - Gas stations
 - Stencils

