



THE HERE AND NOW – BINATIONAL AGREEMENTS

COLORADO RIVER FORUM

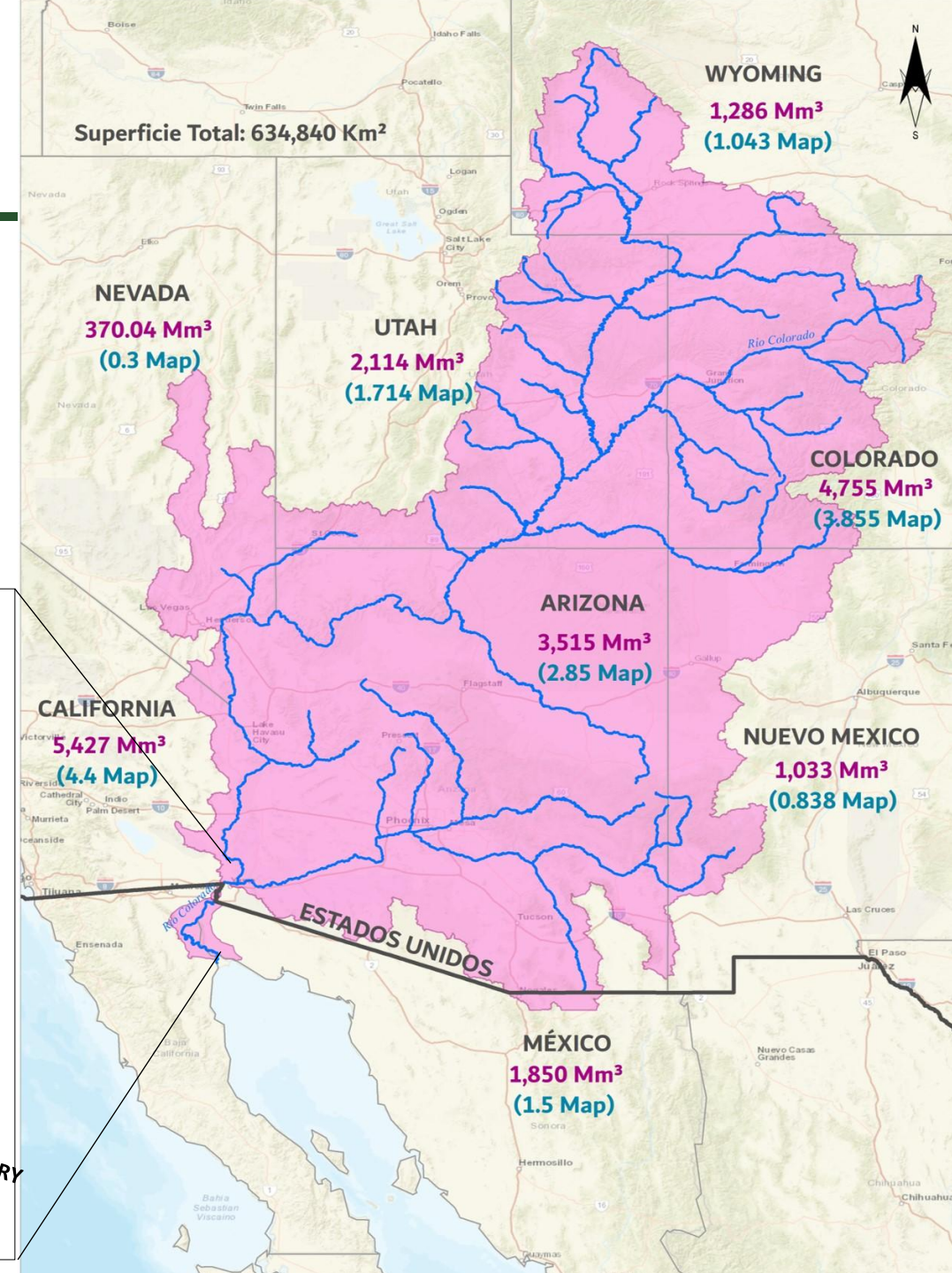
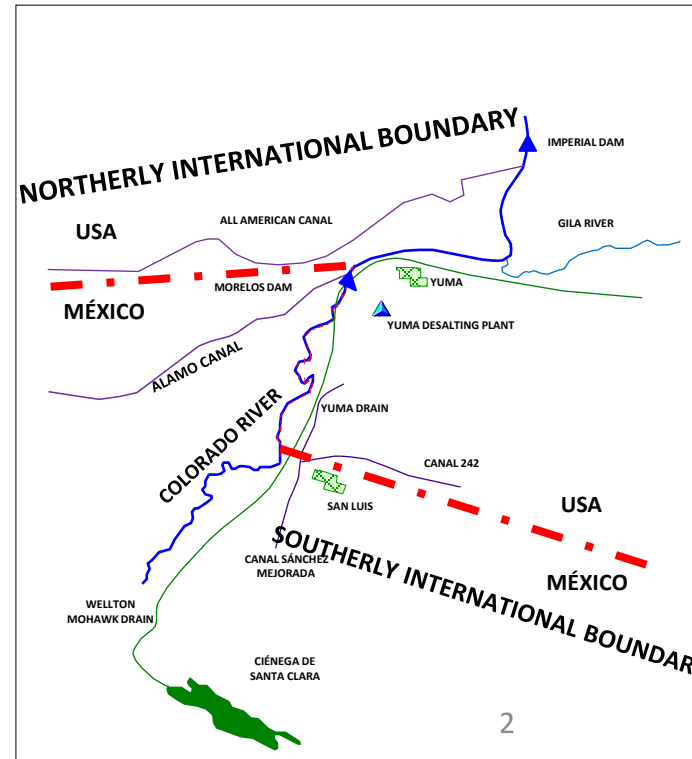
NOV 13, 2025



1944 Water Treaty

Colorado River

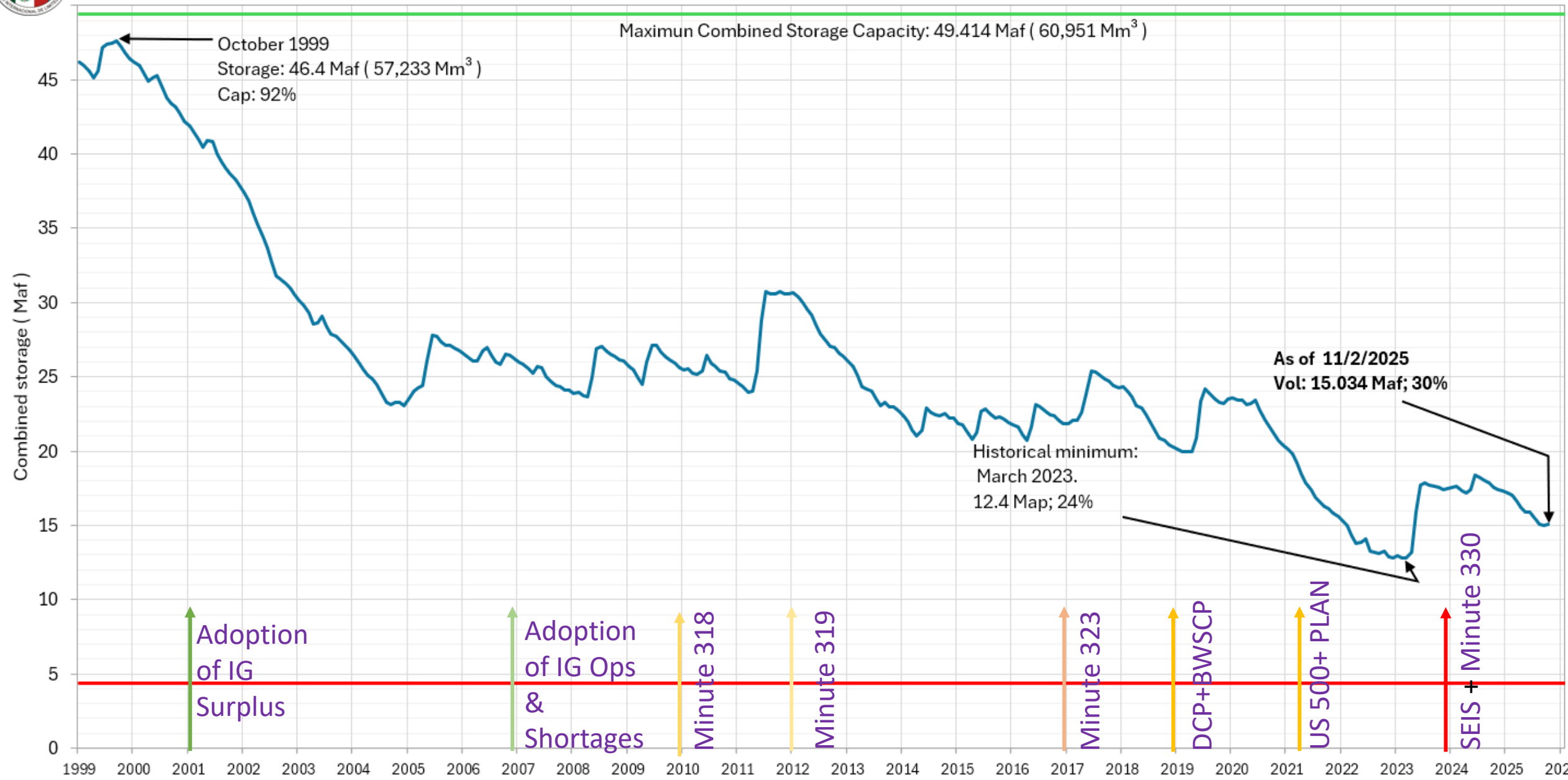
- Allotted to Mexico a guaranteed annual quantity of 1.5 million acre-ft of water
 - 1.36 Maf** at NIB and **0.14 Maf** at SIB.
- When there exist a surplus of waters, the U.S. to deliver additional waters for a volume of up to 1.7 million acre-ft a year
- In the event of extraordinary drought, the water allotment will be reduced in the same proportion as consumptive uses in the U.S. are reduced.





Historical Combined Storage Lakes Mead & Powell

End of month data from October 24-Month Study
published by the U.S. Bureau of Reclamation.



— Maximun Combined Storage Capacity — Historic Data — Minimum Combined Storage Capacity

CILA-IBWC MINUTES



- Per 1944 Treaty: Decisions of the Commission shall be recorded in the form of Minutes
- Take effect when signed by the Commissioners and approved by the two governments
- Minutes provide a mechanism to implement Treaty
- 322 minutes to date



To **address** the provisions set in the **1944 Treaty** by implementing and providing **solutions** inherent to **international waters** and **border issues**

Minutes



Binational Cooperative Measures in the Colorado River

Minute 316

Utilization [...]Infrastructure in the United States for the Conveyance of **Water** by Mexico and NGOs of Both Countries to the **Santa Clara Wetland** During the Yuma Desalting Plant Pilot Run- April 21, 2010.

Minute 317

Conceptual **Framework** for U.S.-Mexico Discussions on Colorado River **Cooperative** Actions - June 25, 2010

Minute 318

Adjustment of Delivery Schedules for **Water** [...] as a Result of **Infrastructure Damage** [...] by the April 2010 **Earthquake** in the Mexicali Valley, Baja California-December 20, 2010

Minute 319

Interim International **Cooperative Measures** in the Colorado River Basin through 2017 and Extension of Minute 318 [...] -November 20, 2012

Minute 323

Extension of **Cooperative Measures** and adoption of a **Binational Water Scarcity Contingency Plan** in the Colorado River Basin- September 21, 2017

Minute 330

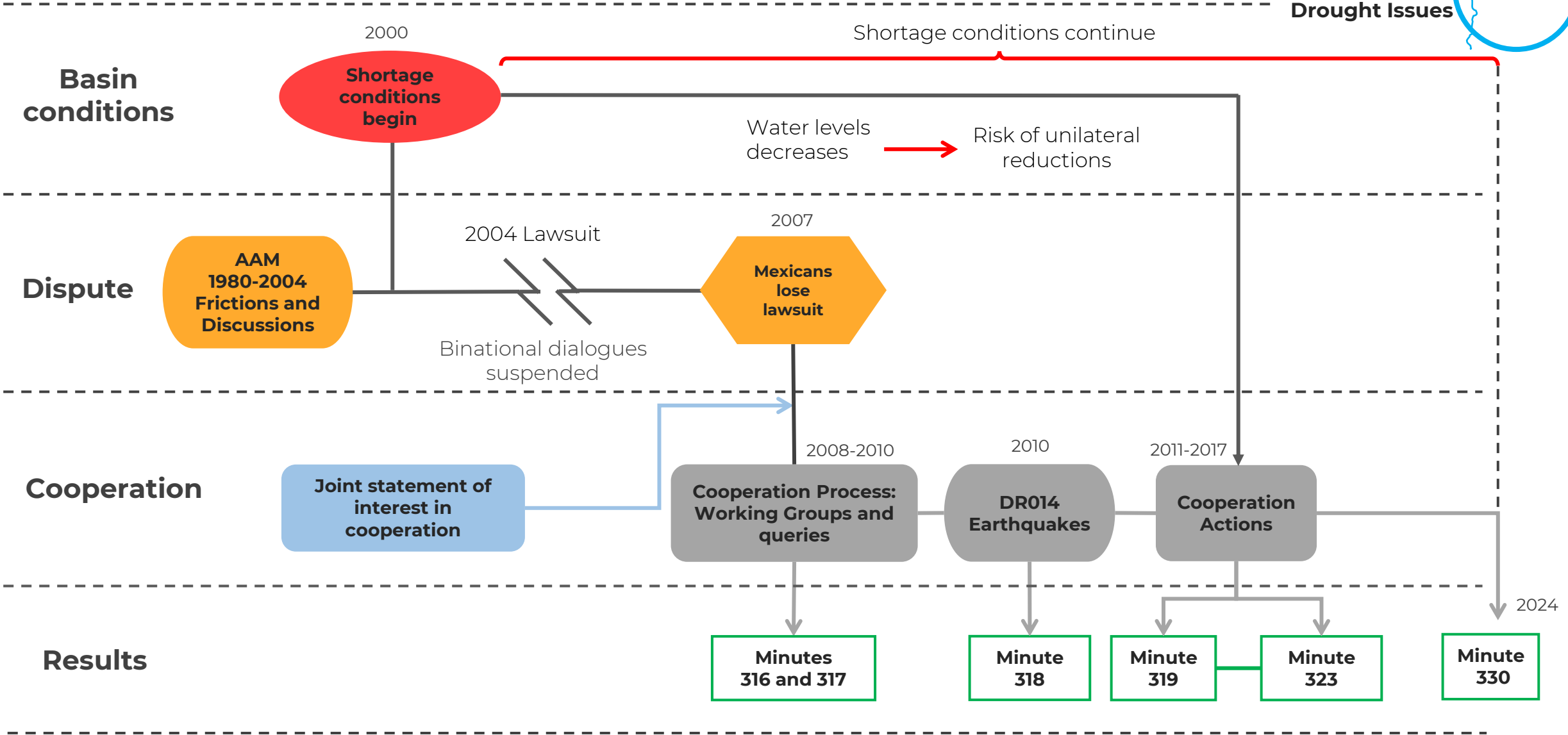
Expansion of Colorado River **Temporary Measures**, March 21, 2024



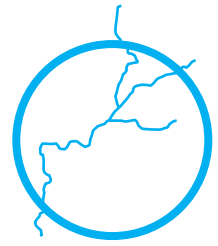
Colorado River: Dispute and Cooperation



Addressing Drought Issues



Minute 323



Extension of cooperative measures...

- Work within a cooperation framework.
- Importance of aligning operations for both countries.
- Proactively address the potential for reductions on the Colorado River.
- Protect the interests of water users in both countries.

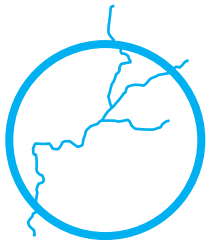
Key elements

DISTRIBUTION OF FLOWS UNDER HIGH ELEVATION RESERVOIR CONDITIONS	MEXICAN WATER RESERVE	ENVIRONMENT
DISTRIBUTION OF FLOWS UNDER LOW ELEVATION RESERVOIR CONDITIONS	SALINITY	INVESTMENTS AND PROJECTS
BINATIONAL WATER SCARCITY CONTINGENCY PLAN	VARIABILITY OF FLOWS ARRIVING MEXICO	ALL-AMERICAN CANAL



Key elements on Minute 330

Expansion of Colorado River Temporary Measures





AS OF NOW....

Since **2023**, the **U.S.** has begun public consultation processes and the development of technical tools to shape new operating criteria for the Basin.

2026: Minutes **323**, 330 and the U.S. **2007 Interim Guidelines**, which define the operation of the Basin, will **expire**.

By the end of 2025 both Sections of the IBWC, in coordination and consultation with their respective **institutions**, would begin with analyses, evaluations, and discussions to define operational guidelines that will apply **equally** and **proportionally** to both countries.

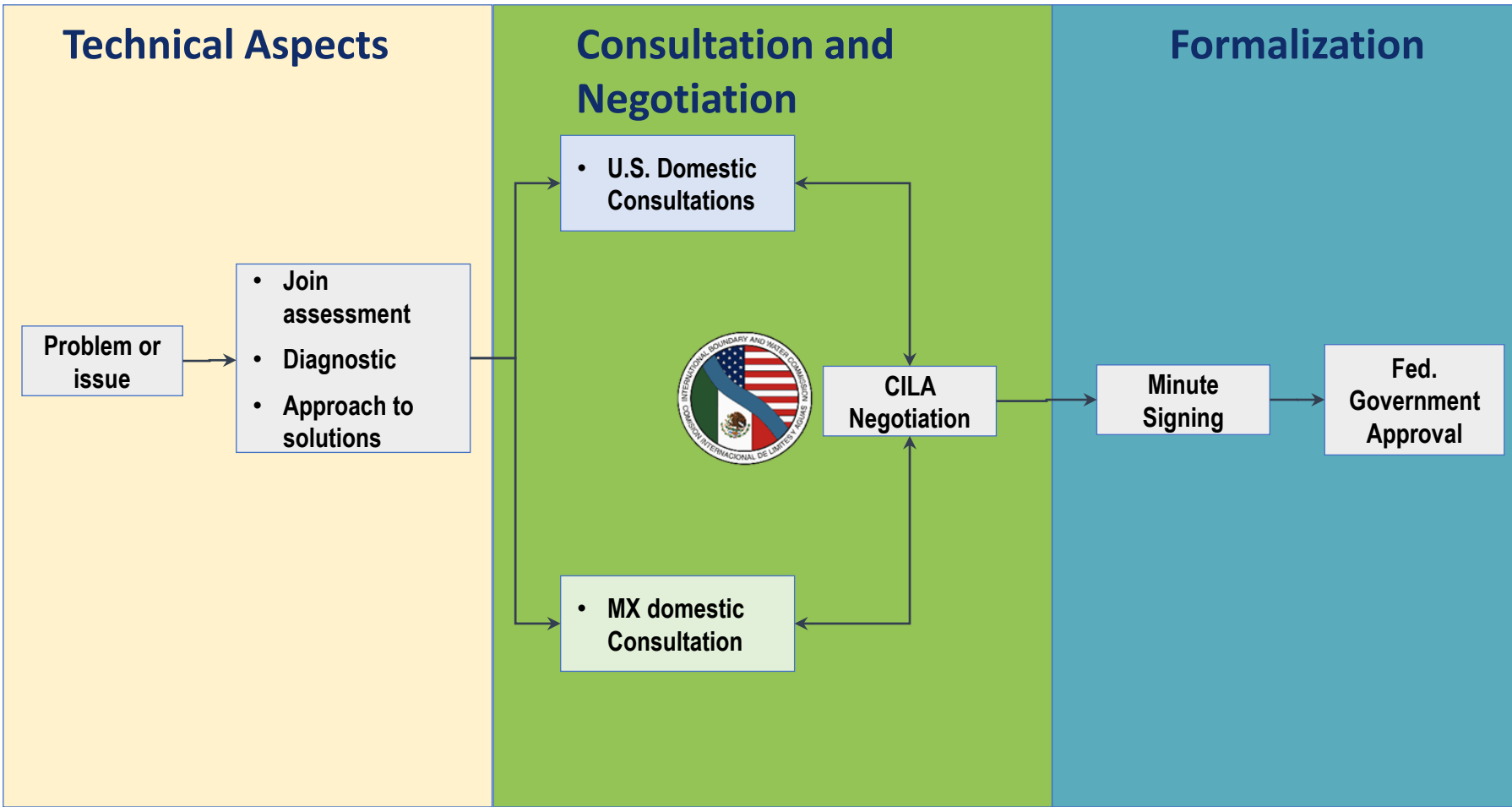
Challenges:

- The Basin has been experiencing drought conditions
- since 2000.
- Temperatures in the Basin continue to rise.
- Water demand increases every year.





HOW...?



- ✓ Article 25 of 1944 Treaty .
- ✓ It's a Treaty mechanism for the Commission to solve new or updated intl. water conditions.
- ✓ The negotiation includes discussion with related institutions and stakeholders
- ✓ Projects within a country are under the jurisdiction of each country's Section.
- ✓ The applicable laws and regulations of each country taken into account.
- ✓ The Commission, by mutual agreement, may establish international norms.



WHAT'S EXPECTED NEXT FOR..

□ 1- DEVELOPMENT OF THE NEW MINUTE:

- Consider the conditions on the basin
- Work within a cooperative framework
- Continue working with binational working groups.

□ 2.- SOME CONCEPTS OF THE NEW MINUTE:

- PROPORTIONAL SHORTAGE AND SURPLUS GUIDELINES TO BOTH COUNTRIES
- BINATIONAL WATER CONSERVATION
- INFORMATION EXCHANGE (WORKING GROUPS)



TRUST AND COOPERATION



**COMISIÓN INTERNACIONAL DE LÍMITES Y AGUAS
ENTRE MÉXICO Y ESTADOS UNIDOS**

Ave. Universidad # 2180
Zona El Chamizal
Cd. Juárez, Chihuahua
CP 32310
Tel. (656) 639-7950

CILA

**INTERNATIONAL BOUNDARY AND WATER COMMISSION
UNITED STATES AND MEXICO**

4171 North Mesa, Suite C100
El Paso, Texas
79902-1441
Tel. (915) 832-4765

IBWC